

## **September 28, 2017**

### **Business Cycle Index**

The BCI at 226.8 is above last week's 226.1 but still below the previous high as indicated by BCIp is at 98.9. However, the 6-month smoothed annualized growth BCIg is at 12.9, which is below last week's 13.1

No recession is signaled.

## **September 29, 2017**

### **Market Signals Summary:**

The MAC-US model is invested. However, the "3-mo Hi-Lo Index of the S&P500" generated a sell signal on 8/22/2017 and is in cash. The monthly updated S&P500 Coppock indicator is also invested. The MAC-AU is also invested. The recession indicators COMP and iM-BCIg do not signal a recession. The bond market model avoids high beta (long) bonds, and the yield curve has a possible flattening trend. Both the gold and silver Coppock models are invested, and the iM-Gold Timer is in gold since 7/10/2017.

### **Stock-markets:**

The [MAC-US](#) model generated a buy-signal 4/5/2016 and thus is invested in the stock-markets. The sell-spread (red graph) is below last week's level and has to fall below zero to signal a sell.

The [3-mo Hi-Lo Index](#) of the S&P500 is above last week's level at 4.3% (last week 4.13%) and is out of the market since 8/22/2017.

The MAC-AU model is invested in the markets after it generated a buy signal on March 21, 2016. The sell-spread is below last week's level and has to fall below zero to signal a sell. This model and its application is described in [MAC-Australia: A Moving Average Crossover System for Superannuation Asset Allocations](#).

### **Recession:**

Figure 3 shows the COMP above last week's level. No recession is indicated. COMP can be used for stock market exit timing as discussed in this article [The Use of Recession Indicators in Stock Market Timing](#).

Figure 3.1 shows the recession indicator iM-BCI<sub>g</sub> which is down from last week's level. An imminent recession is not signaled. Please also refer to the [BCI page](#)

The Forward Rate Ratio between the 2-year and 10-year U.S. Treasury yields (FRR2-10) is near last week's level and far away from signaling a recession. The downward trend of the FRR2-10 has slowed. A description of this indicator can be [found here](#).

### **Bond-market:**

The [BVR-model](#) avoids high beta bonds (long-bonds) and also intermediate duration bonds. The Bond Value Ratio is shown in Fig 4. The BVR is below last week's level. According to the model, only when BVR turns upward after having been lower than the lower offset-line should one consider long bonds again.

### **The Yield Curve:**

The [yield curve model](#) indicates the trend of the 10-year and 2-year Treasuries yield spread. Figure 5 charts (i10 – i2) showing an indeterminate trend. A buy FLAT signal was generated on 2/8/2017. FLAT and STPP are ETNs; STPP profits from a steepening yield curve and FLAT increases in value when the yield curve flattens. This model confirms the direction of the BVR.

### **Gold:**

The modified Coppock Gold indicator shown in Fig 6. This model generated a new buy signal early November 2016 and is invested in gold. This indicator is described in [Is it Time to Buy Gold Again? – Wait for the buy signal .....](#)

The [iM GOLD-TIMER Rev-1](#) is invested in gold since 7/10/2017.

### **Silver:**

The modified Coppock Silver indicator shown in Fig 7. This model generated a new buy signal late November 2016 and is invested in silver. This indicator is described in [Silver – Better Than Gold: A Modified Coppock Indicator for Silver](#).

---

---

## Monthly Updates

**September 1, 2017** (next update October 6)

### Unemployment

The unemployment rate recession model ([article link](#)), has been updated with the August UER of 4.4%. Based on the historic patterns of the unemployment rate indicators prior to recessions one can reasonably conclude that the U.S. economy is not likely to go into recession anytime soon. The growth rate UERg is at minus 11.13% (last month minus 12.68%) and EMA spread of the UER is at minus 0.21% (last month minus 0.27%).

Here is the link to [the full update](#).

### The Dynamic Linearly Detrended Enhanced Aggregate Spread:

The updated level of this indicator, -104bps (last months -96bps), confirms the January 20, 2017 signal. Based on past history a recession could start at the earliest in October 2017, but not later than May 2019. The average lead time to previous recessions provided by DAGS was 15 months which would indicate a recession start for April 2018.

### Coppock Indicator for the S&P500

The Coppock indicator for the S&P500 entered the market end May 2017. This model is in stocks. This indicator is described [here](#).

### CAPE-Cycle-ID

Fig 9a depicts the CAPE-Cycle-ID and the year-on-year rate-of-change of the Shiller CAPE. A model using this indicator invests in the market when the Cycle-ID is +2 or 0, and when the Cycle-ID equals -2 the model is in cash. This indicator is described [here](#).

### Trade Weighted USD

The TW\$ value is weakening in spite of increasing federal fund rates.

### TIAA Real Estate Account

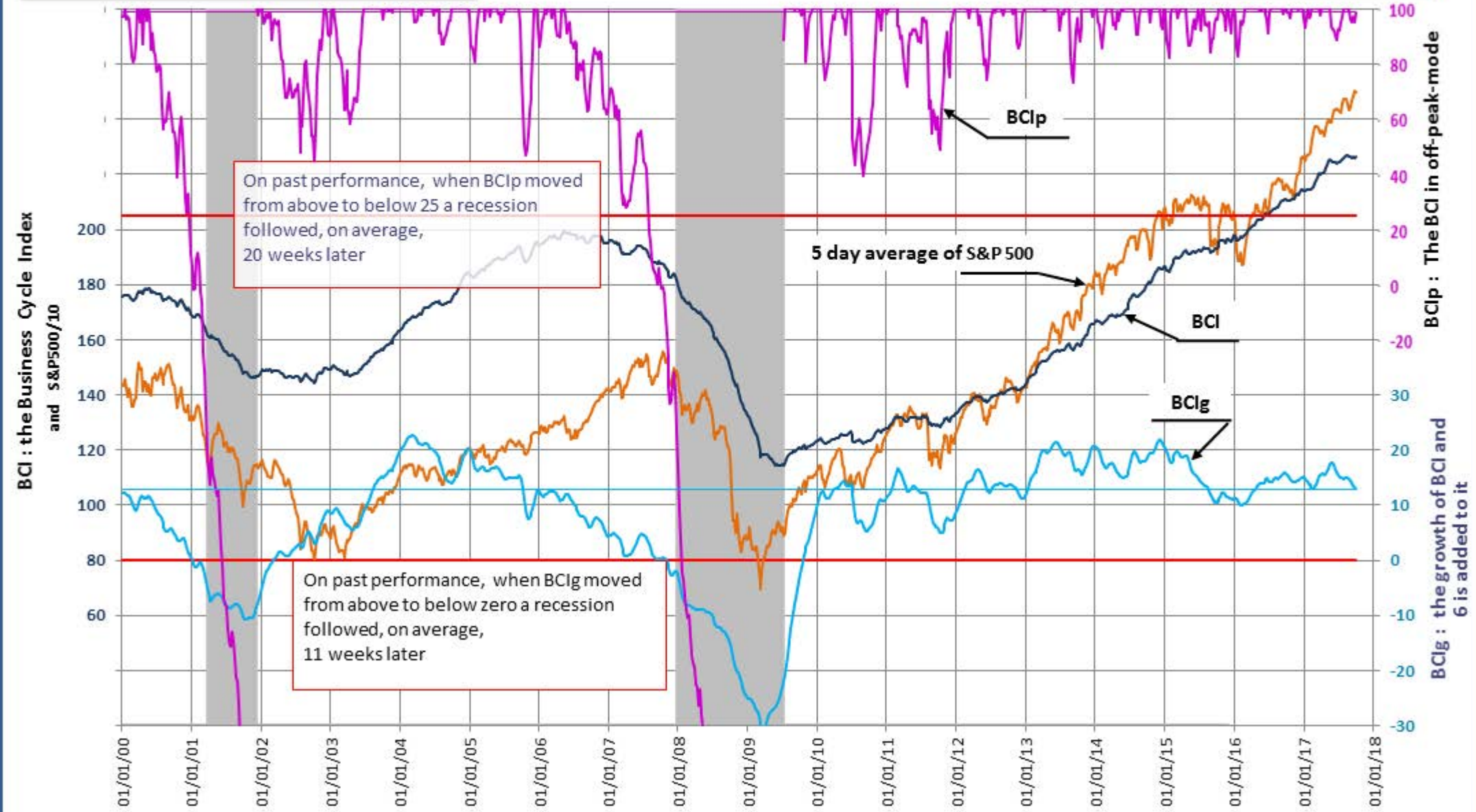
The 1-year rolling return for the end of last month is 4.14%. A sell signal is not imminent.  
[Read more ...](#)

# im's Business Cycle Index (BCI)

BCIp, BCI and BCIG  
updated to September 28, 2017

On past performance, BCIp = 100 can be interpreted as an average one year "time-to-live" to a recession.

Date	08/31	09/07	09/14	09/21	09/28
BCIp	96.1	95.4	97.2	95.1	98.9
BCI	226.3	226.2	226.4	226.1	226.6
BCIg	14.4	14.0	13.5	13.1	12.9



**Figure 2: Buy and Sell signals for S&P 500 2010-16**  
from the modified golden-cross MAC-System

updated to...9/28/17

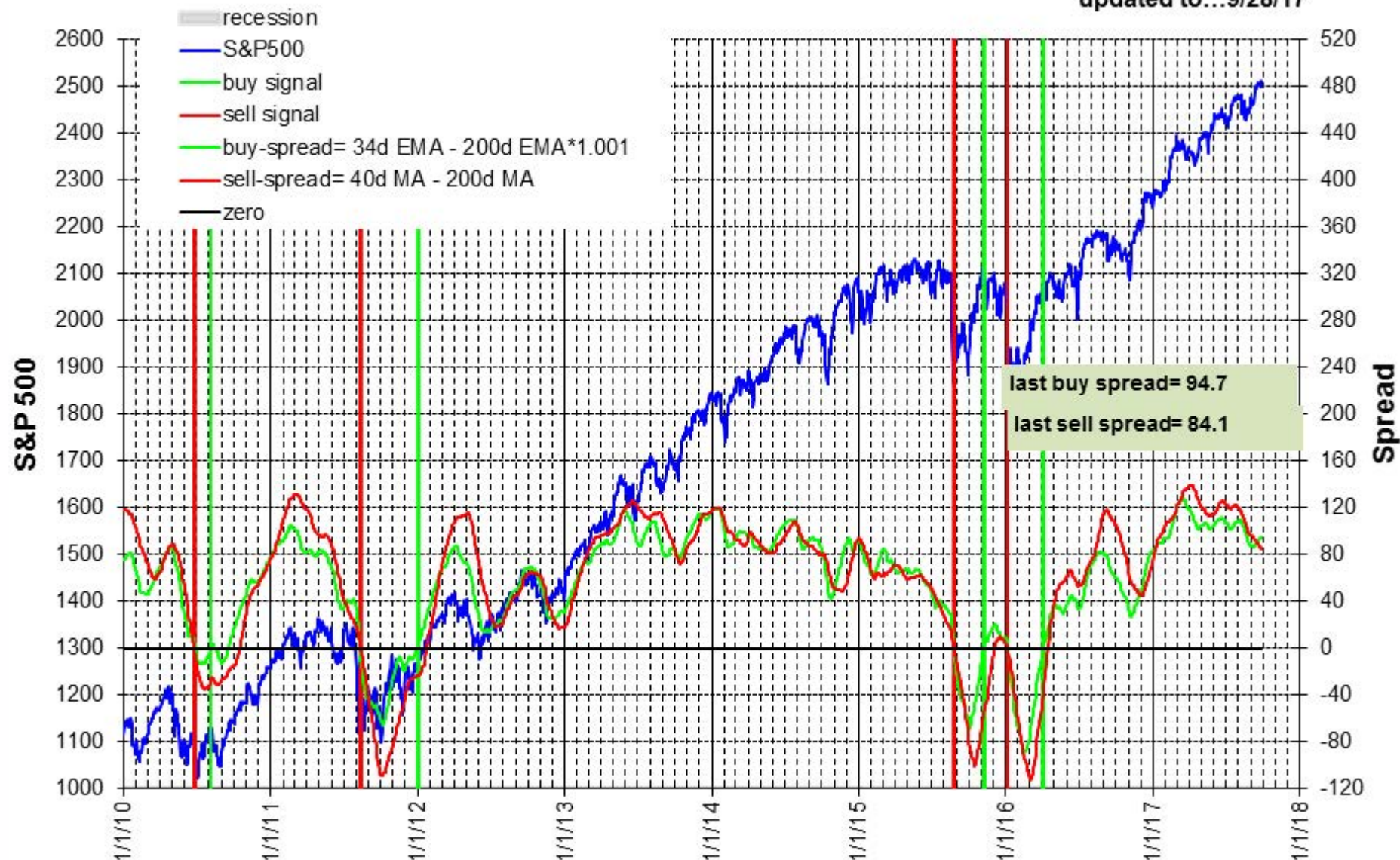


Fig 2.1: Buy and Sell signals for the Australia All Ordinaries Index from the MAC-AU System



updated to Sep-29-17  
last sell spread= 60.0

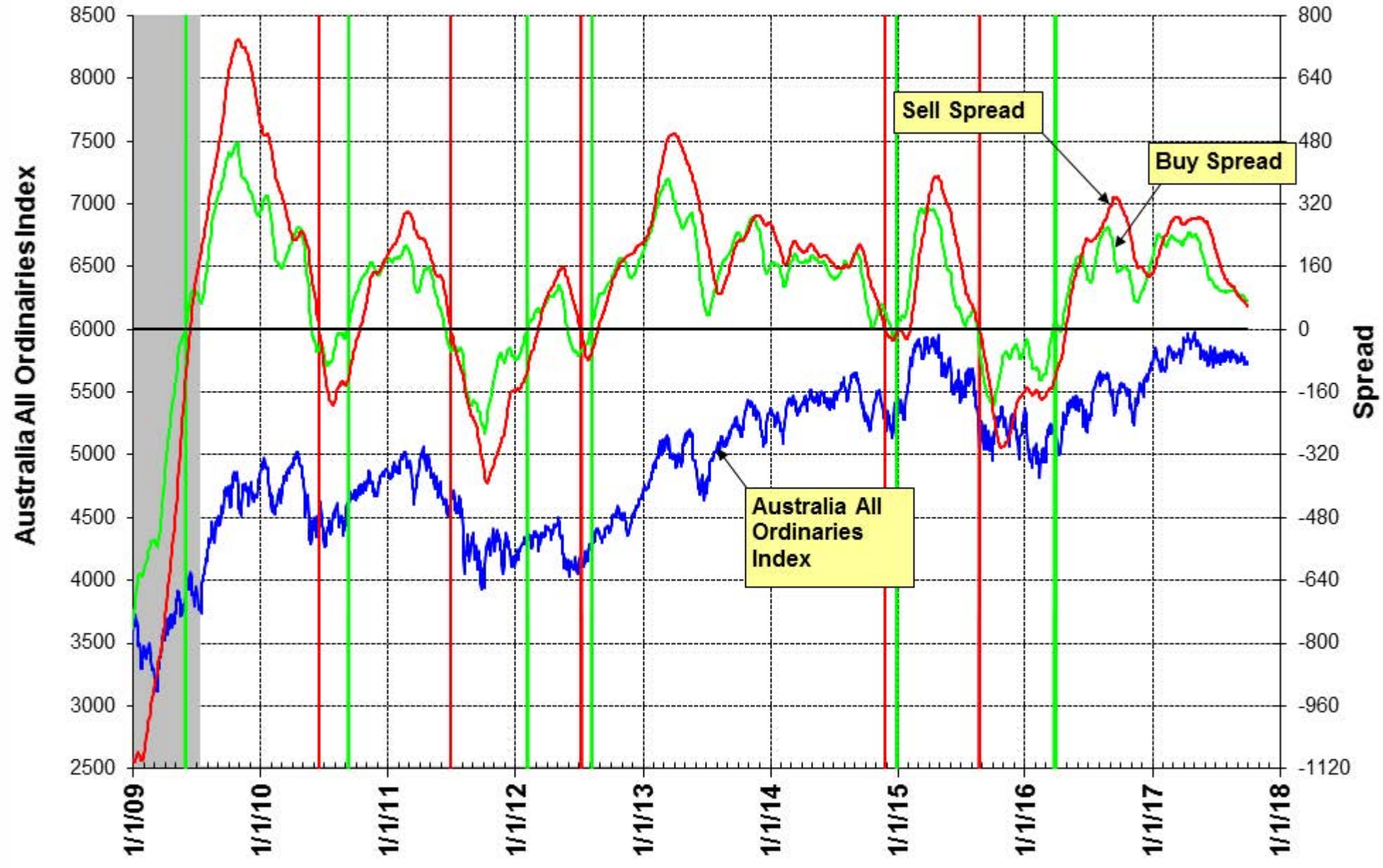
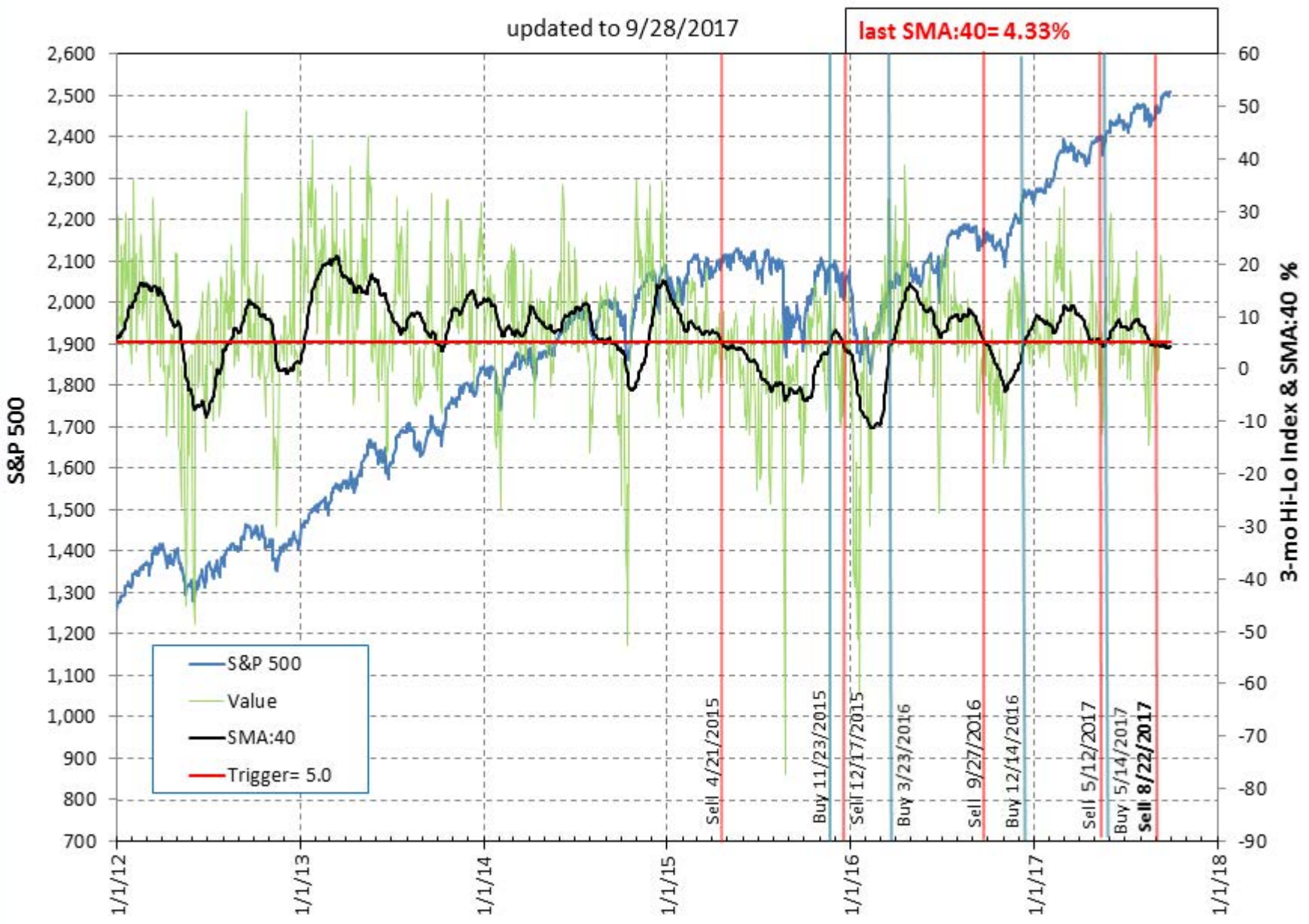


Fig 2.2 3-mo Hi-Lo Index of the S&P500 & 40-day SMA of Index



### Fig. 3: COMP Leading Indicator of US Economy 1969-2016

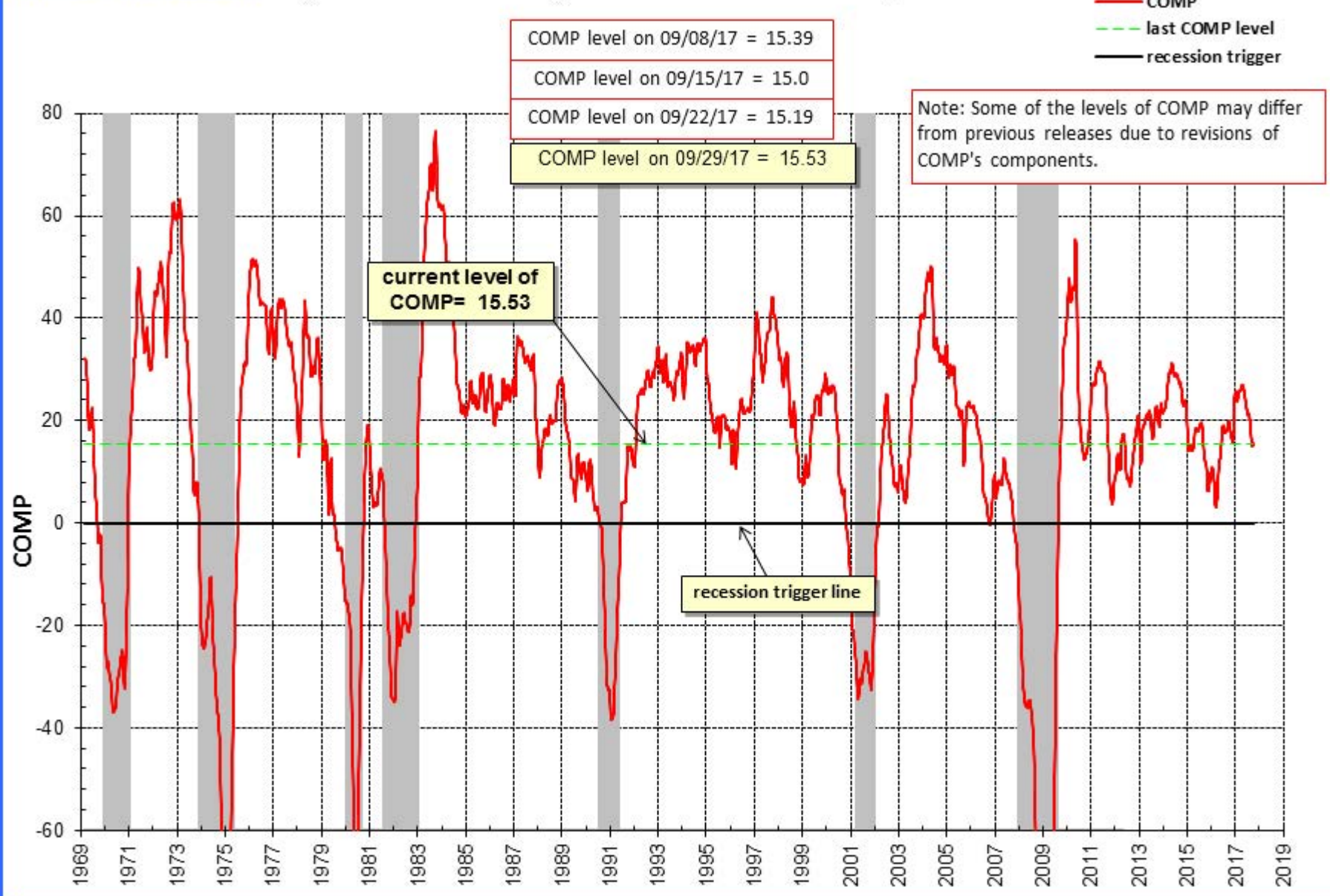
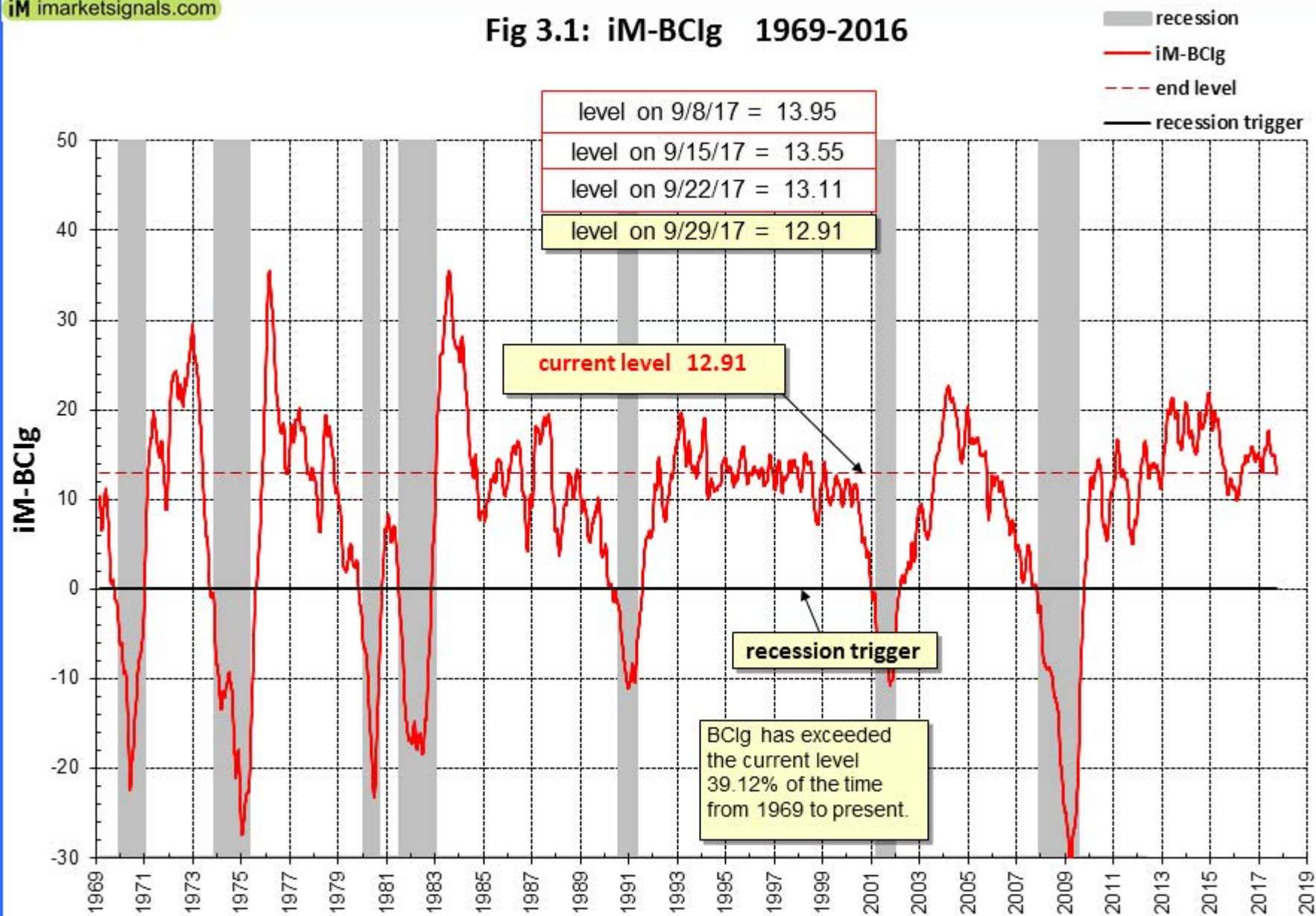


Fig 3.1: iM-BCI<sub>g</sub> 1969-2016

**Figure 3.2: Forward Rate Ratio FRR2-10 - leads to Recessions**

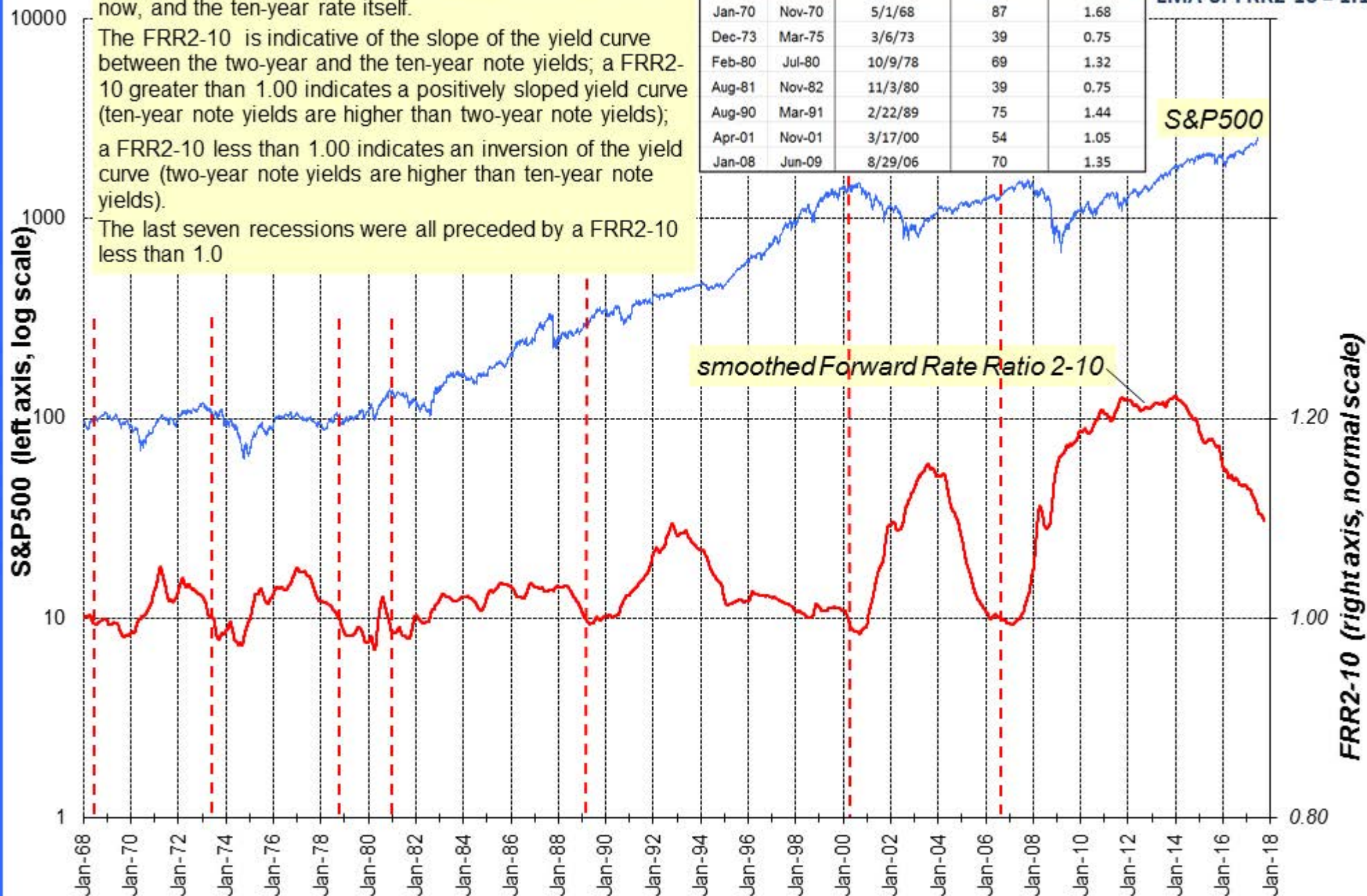
FRR2-10 is the ratio of the rate at which one can lock in borrowing for the eight year period starting two years from now, and the ten-year rate itself.

The FRR2-10 is indicative of the slope of the yield curve between the two-year and the ten-year note yields; a FRR2-10 greater than 1.00 indicates a positively sloped yield curve (ten-year note yields are higher than two-year note yields); a FRR2-10 less than 1.00 indicates an inversion of the yield curve (two-year note yields are higher than ten-year note yields).

The last seven recessions were all preceded by a FRR2-10 less than 1.0

Recessions start	Recessions end	Date when EMA of FRR2-10 less than 1.0	Lead to Ression start (weeks)	Lead to Ression start (years)
Jan-70	Nov-70	5/1/68	87	1.68
Dec-73	Mar-75	3/6/73	39	0.75
Feb-80	Jul-80	10/9/78	69	1.32
Aug-81	Nov-82	11/3/80	39	0.75
Aug-90	Mar-91	2/22/89	75	1.44
Apr-01	Nov-01	3/17/00	54	1.05
Jan-08	Jun-09	8/29/06	70	1.35

updated to 09/28/2017  
EMA of FRR2-10 = 1.10



### Figure 4: Bond Value Ratio (BVR) from 2005 to 2017

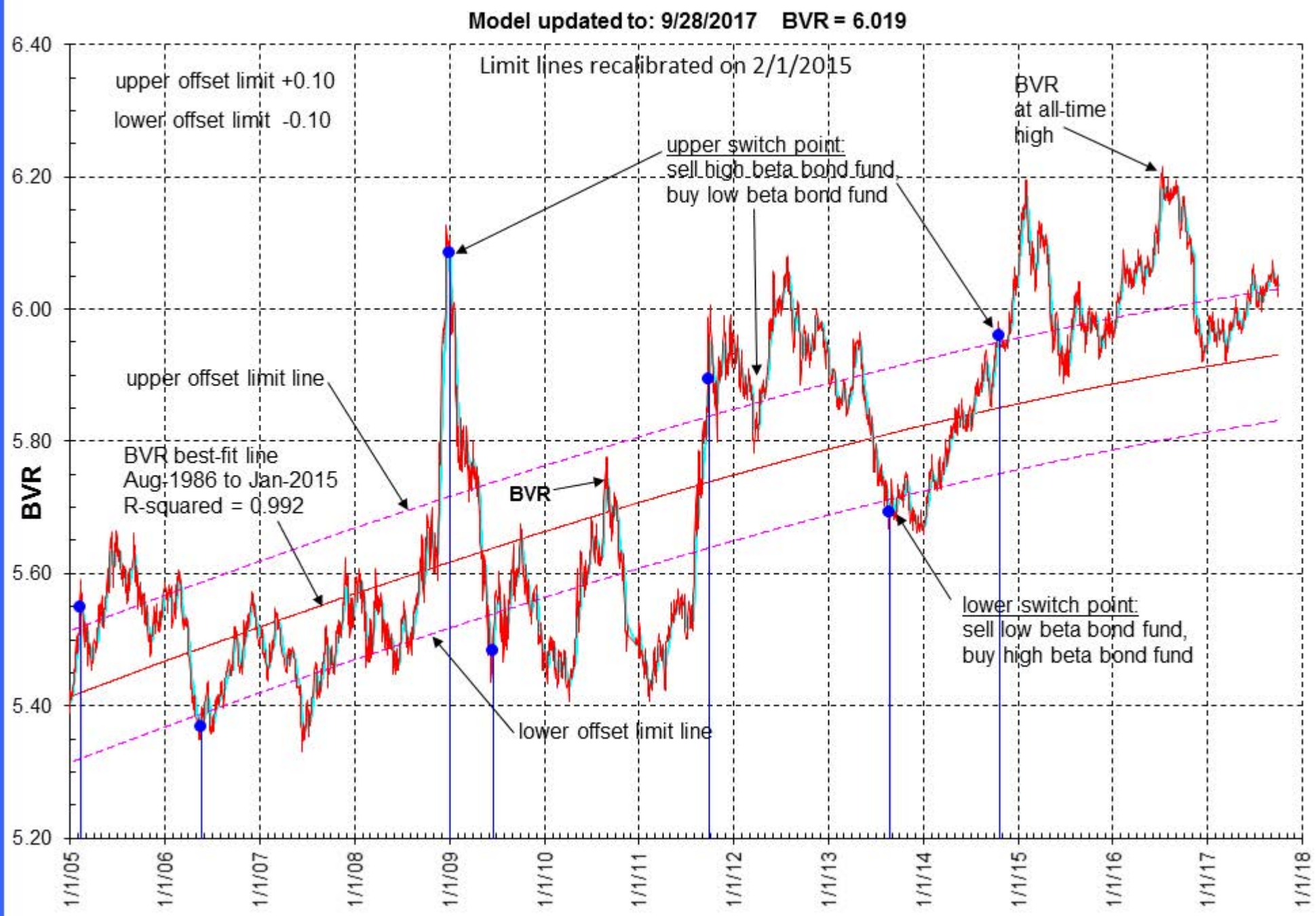
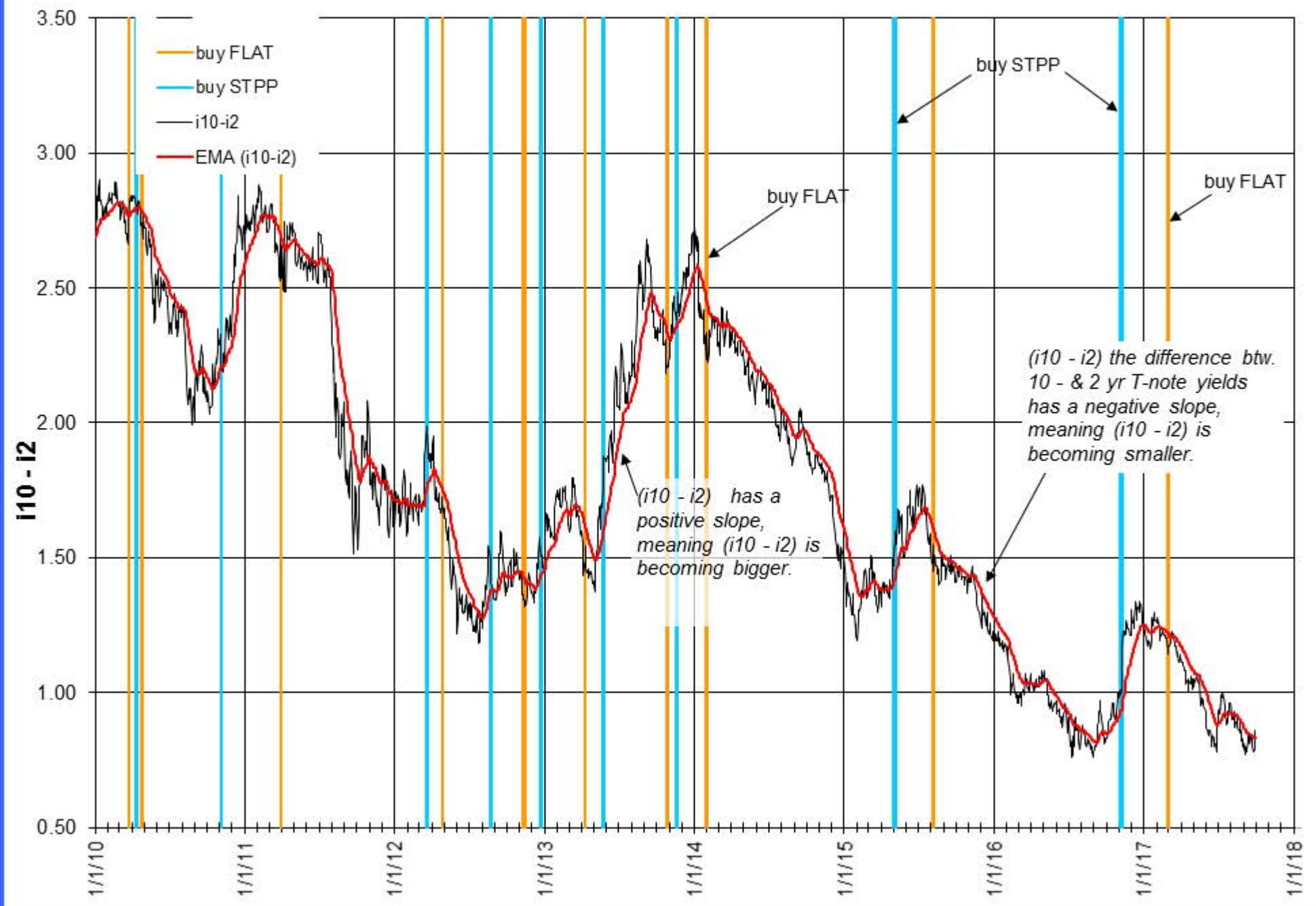


Figure 5: i10 - i2 Updated to....9/28/17



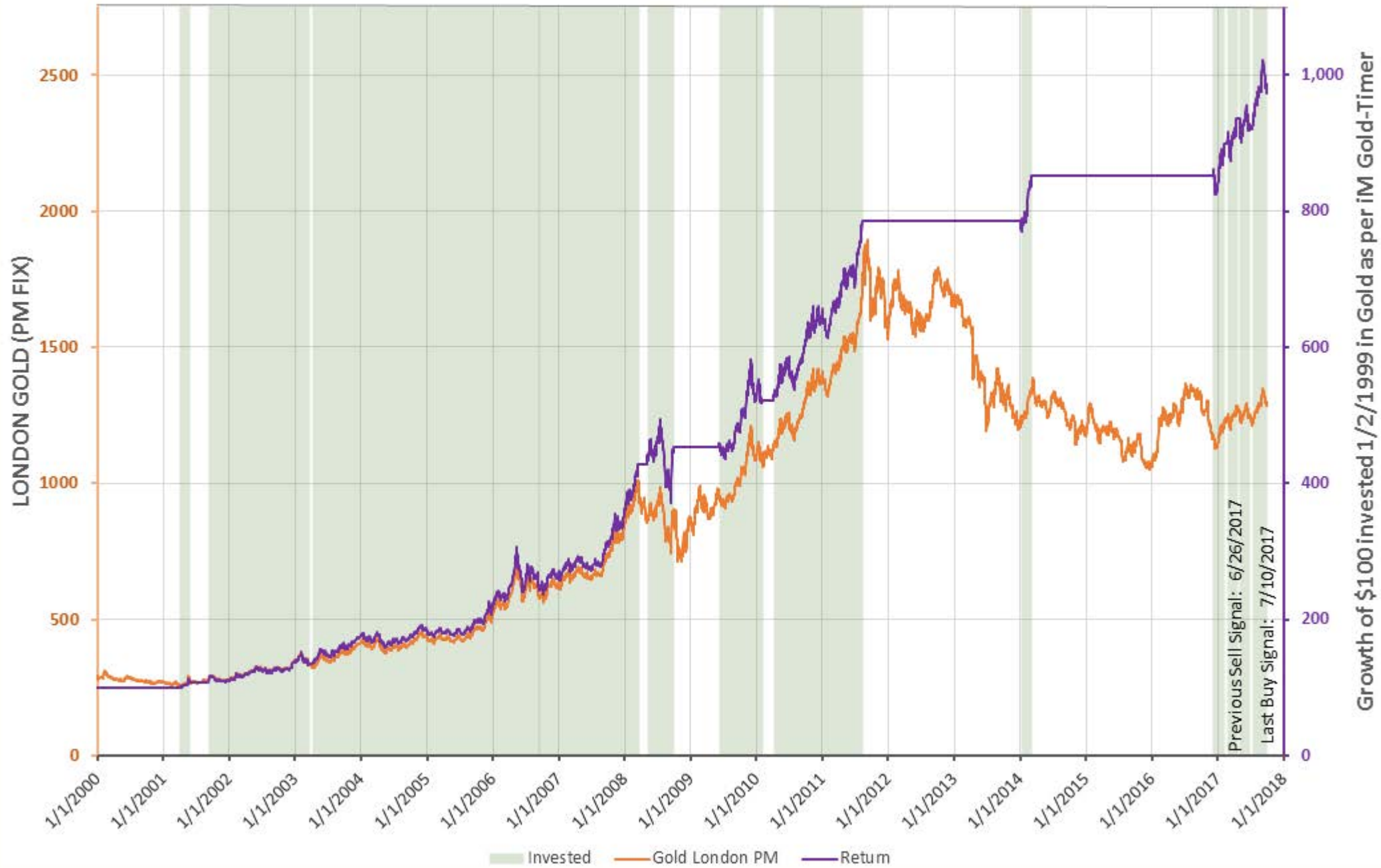
**Figure 6: Modified Coppock Indicator for Gold 2009-2017**

updated to 09/29/2017



Fig. 6.1a iM GOLD-TIMER - Rev 1

Updated to: 9/28/2017



# Figure 7: Modified Coppock Indicator for Silver 2009-2017

updated to 09/29/2017

